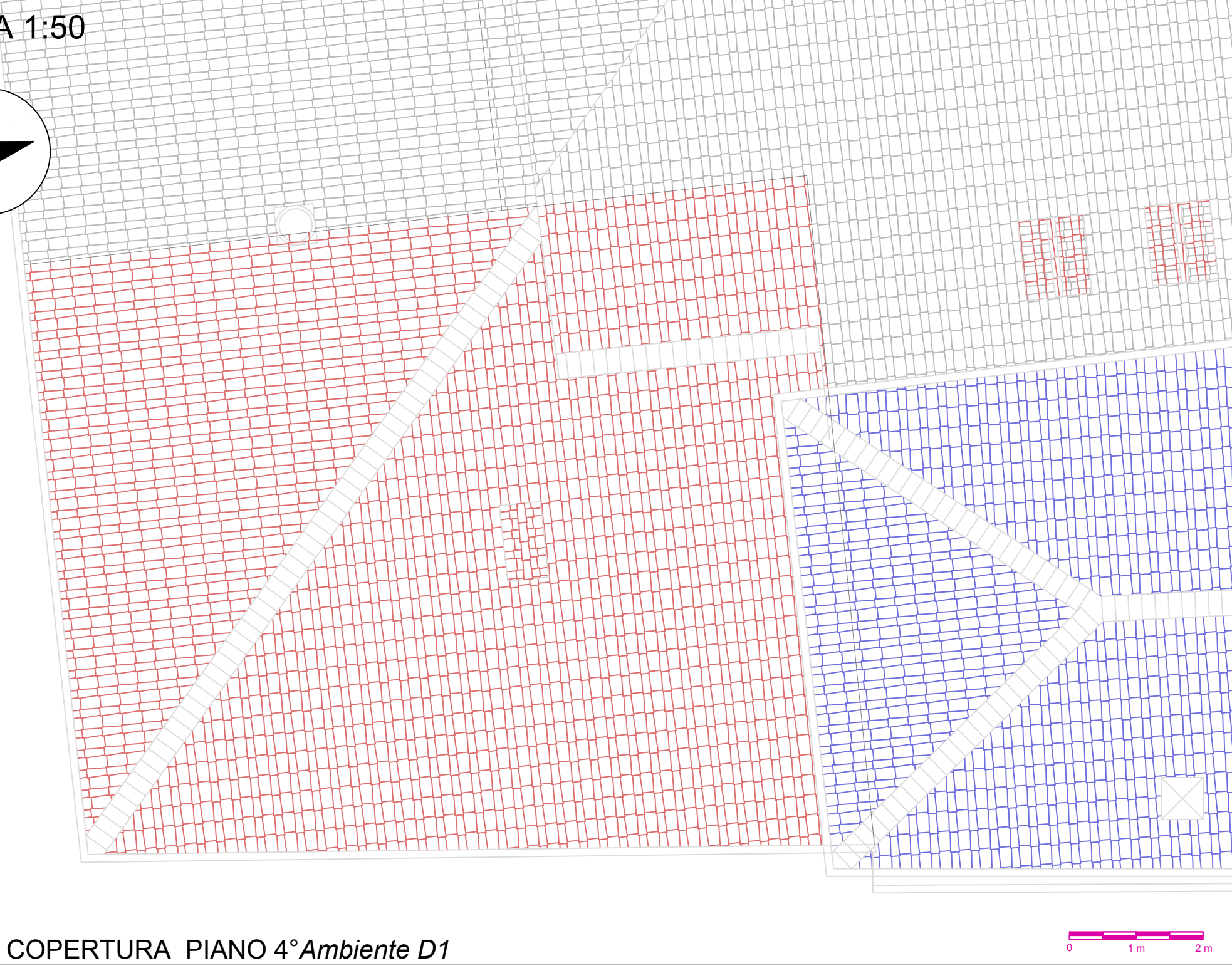
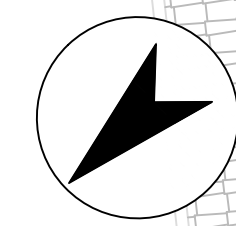
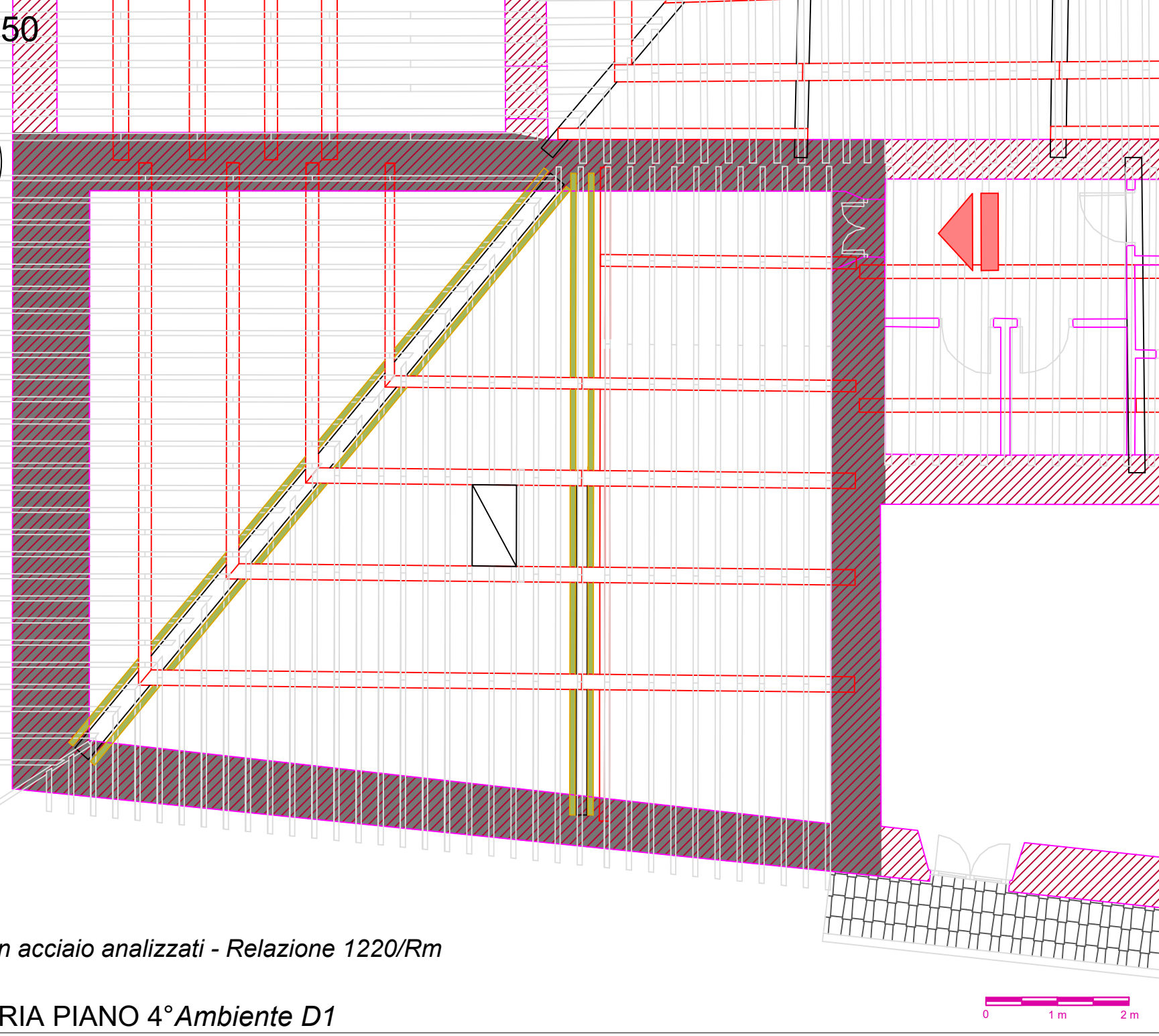
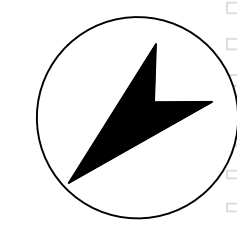


SCALA 1:50



PIANTA COPERTURA PIANO 4° Ambiente D1

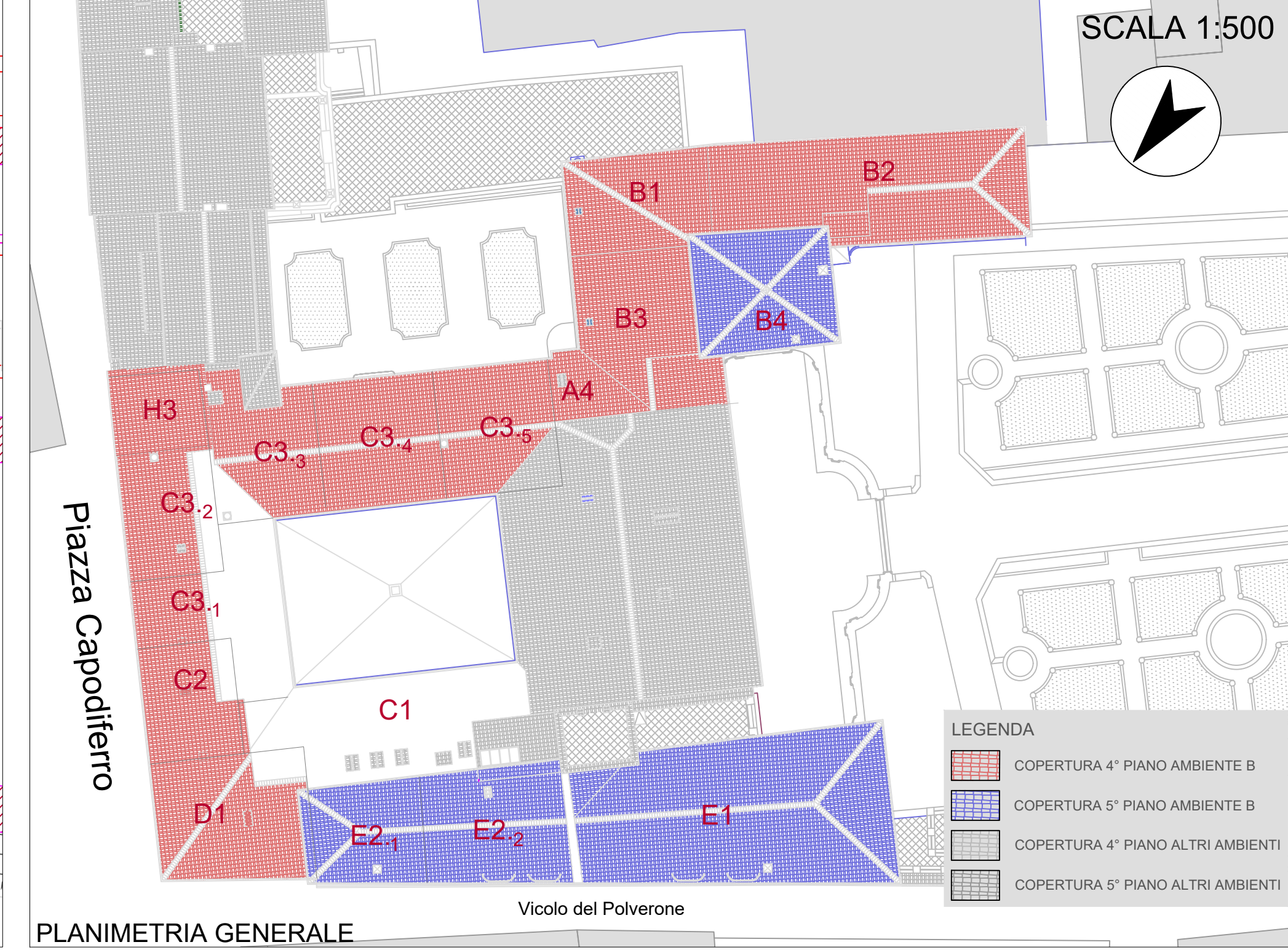
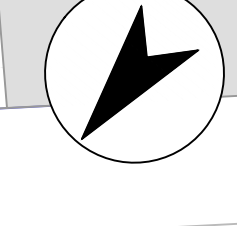
SCALA 1:50



CARPENTERIA PIANO 4° Ambiente D1

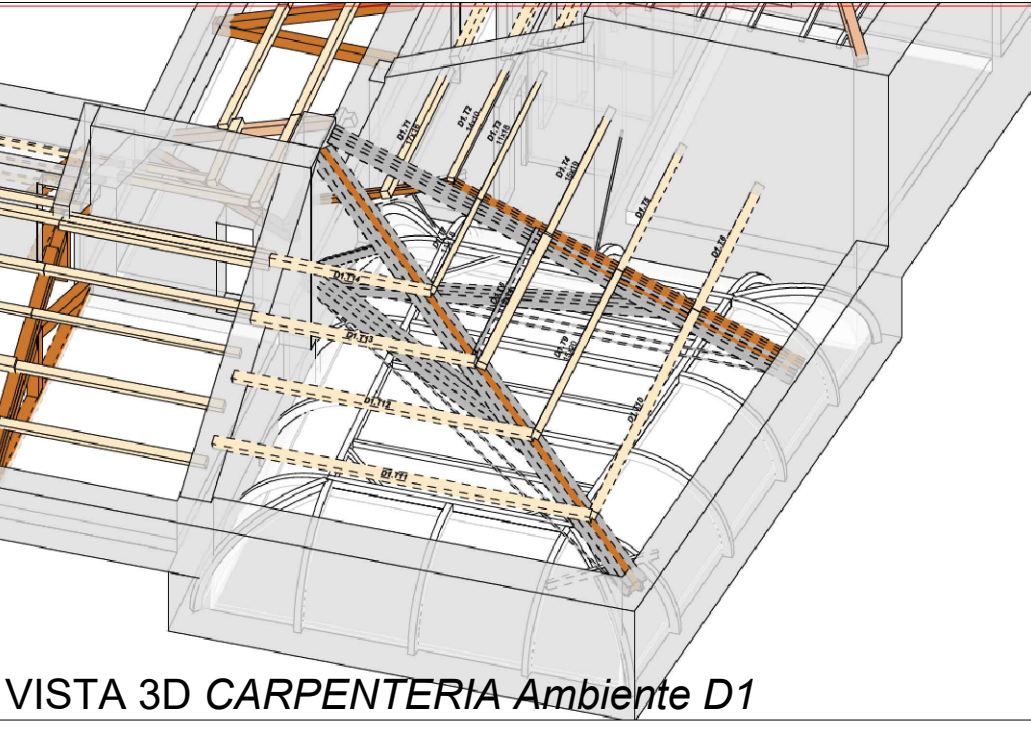
Profili in acciaio analizzati - Relazione 1220/Rm

SCALA 1:500



PLANIMETRIA GENERALE

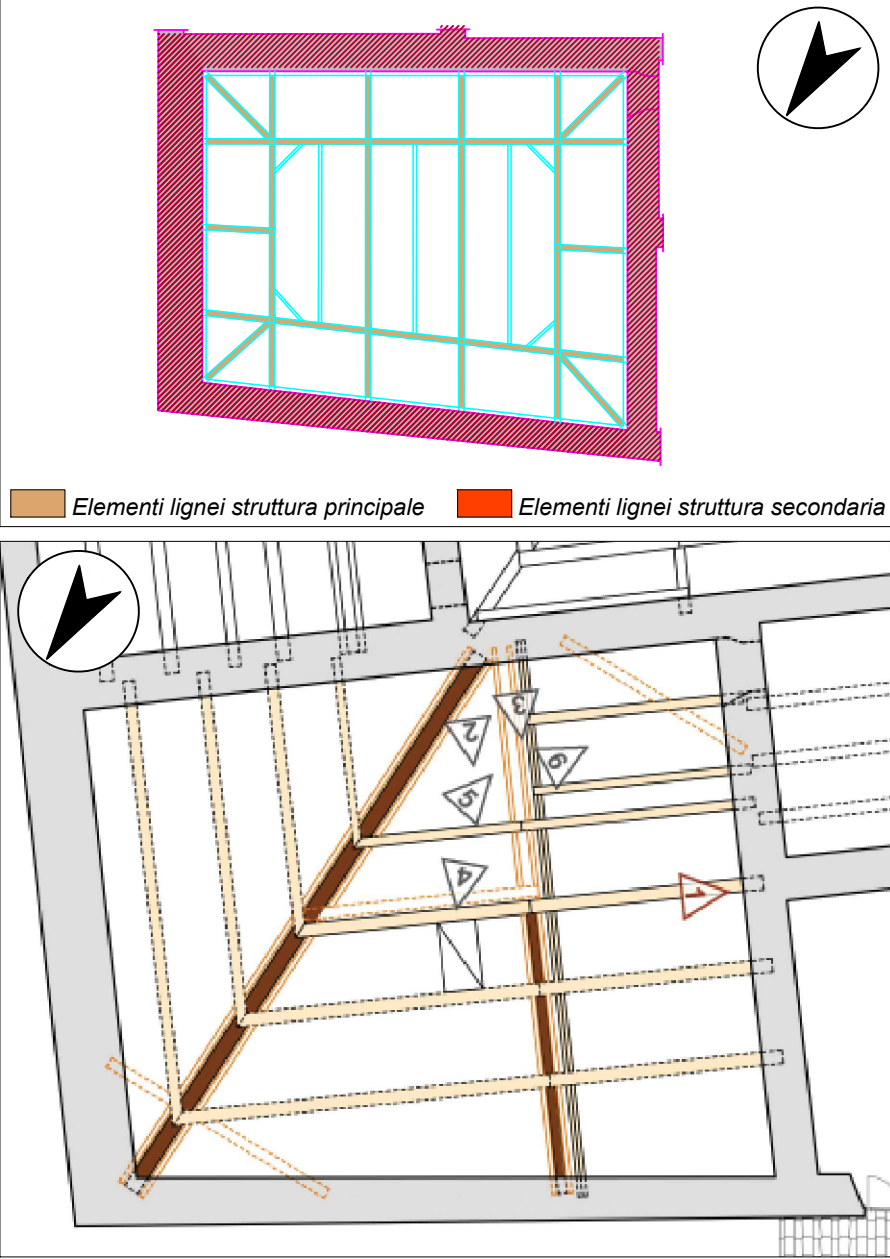
Vicolo del Polverone



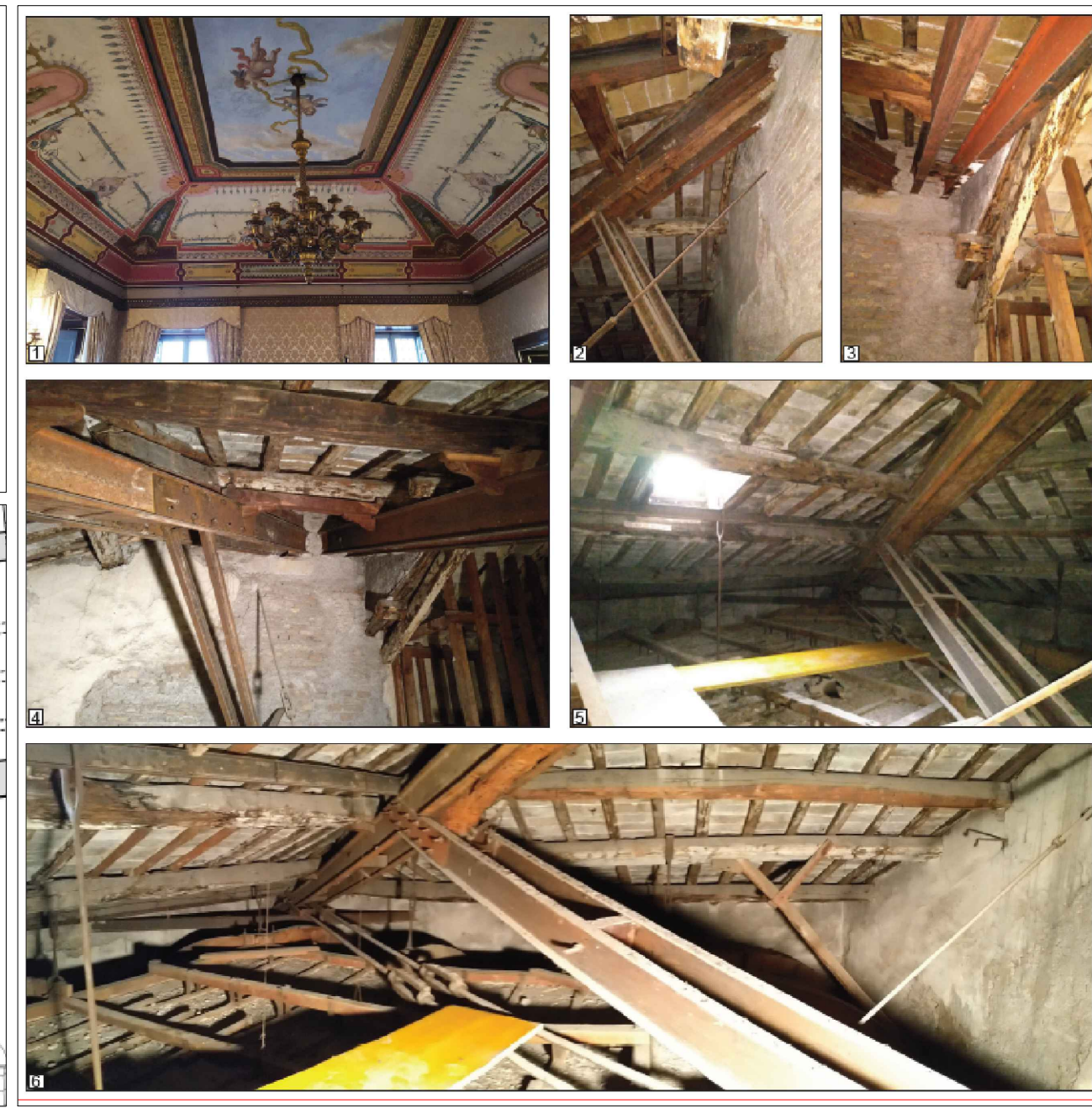
VISTA 3D CARPENTERIA Ambiente D1



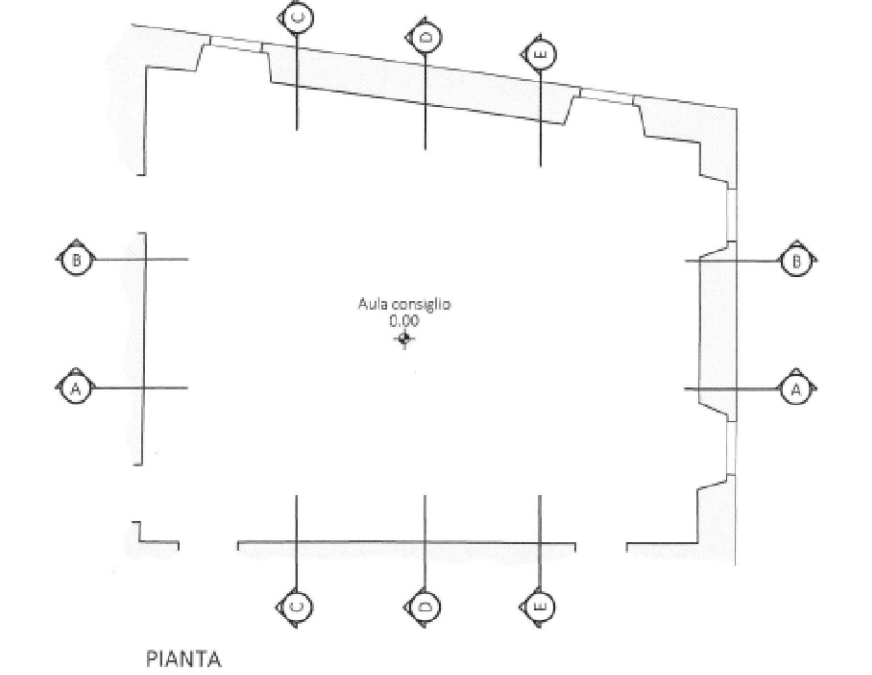
CENTINA CAMERA A CANNE



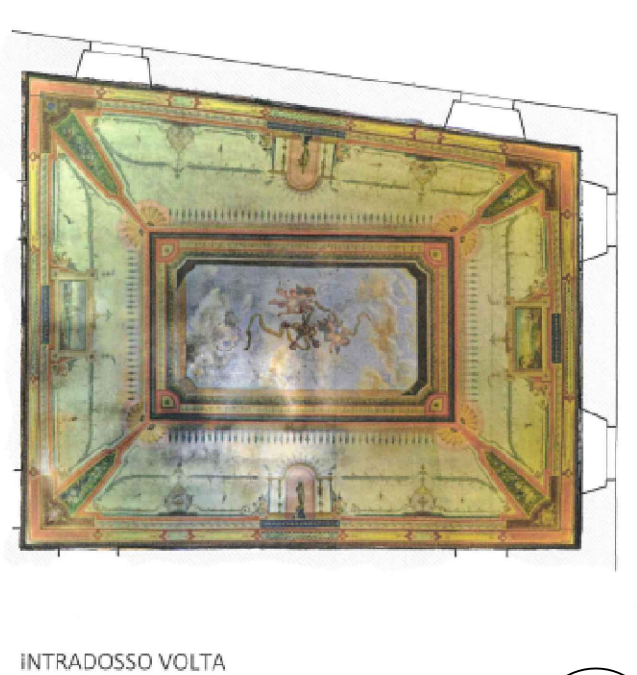
Elementi lignei struttura principale Elementi lignei struttura secondaria



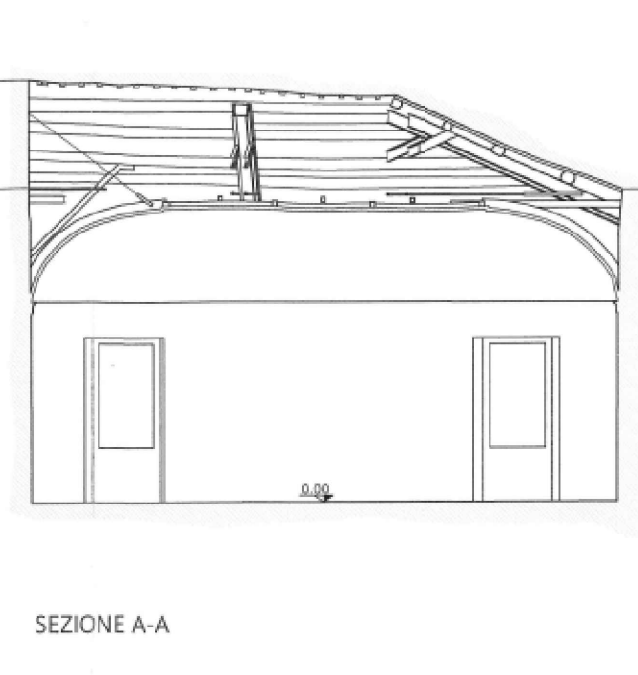
FOTOCOPERTURA Ambiente D1



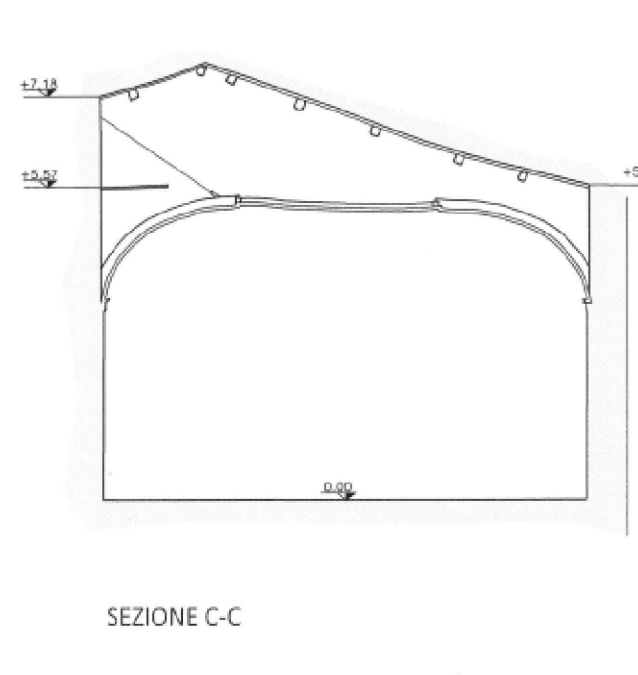
PIANTA



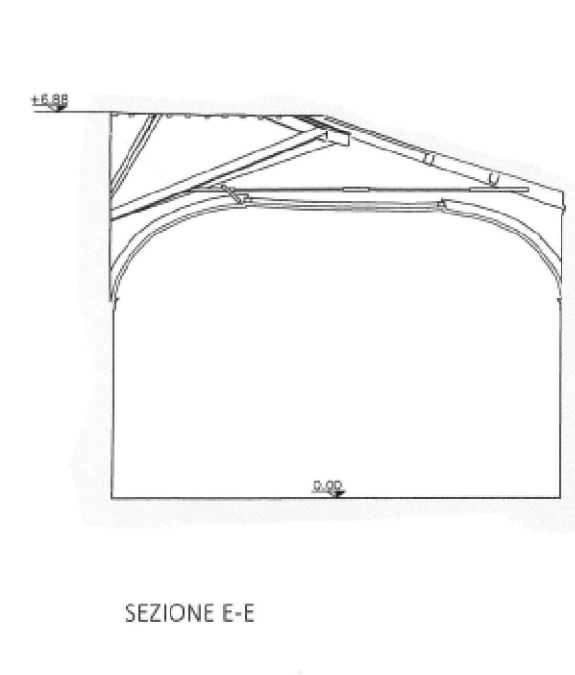
INTRADOSSO VOLTA



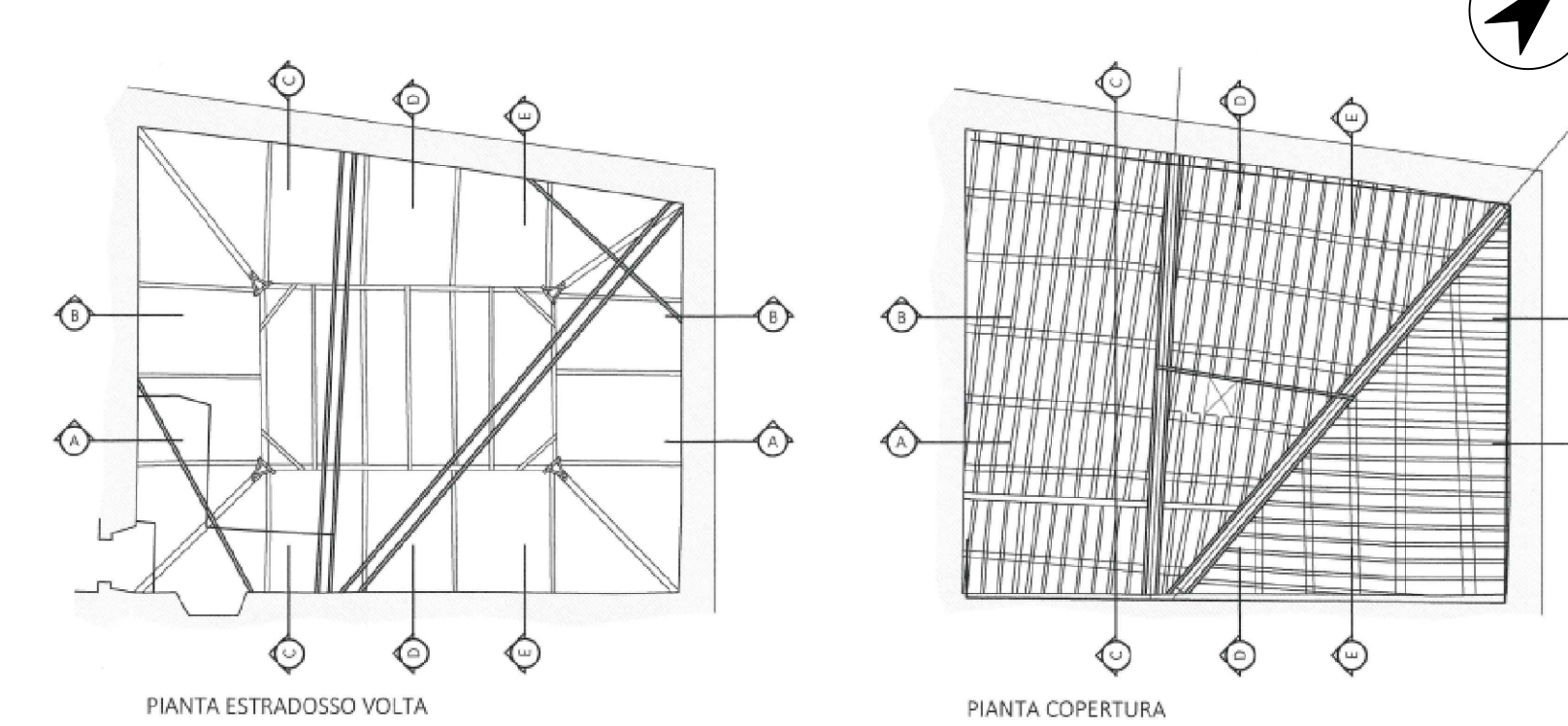
SEZIONE A-A



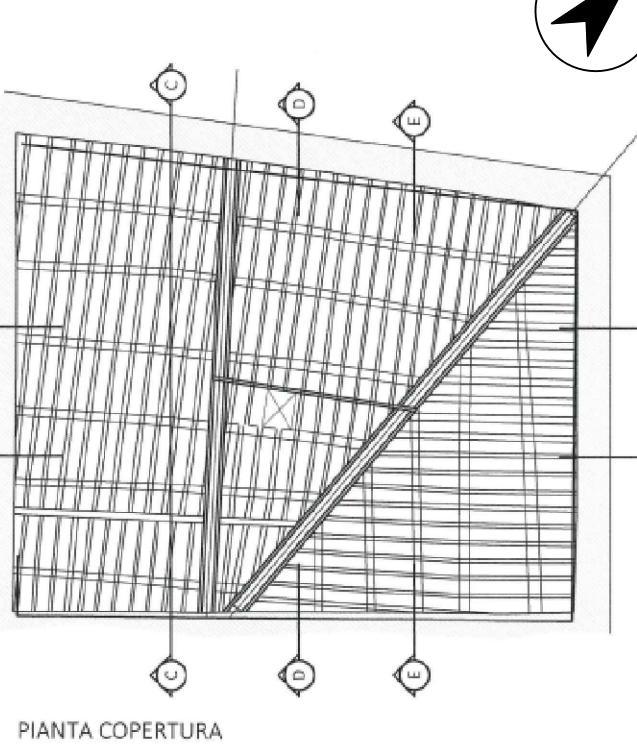
SEZIONE C-C



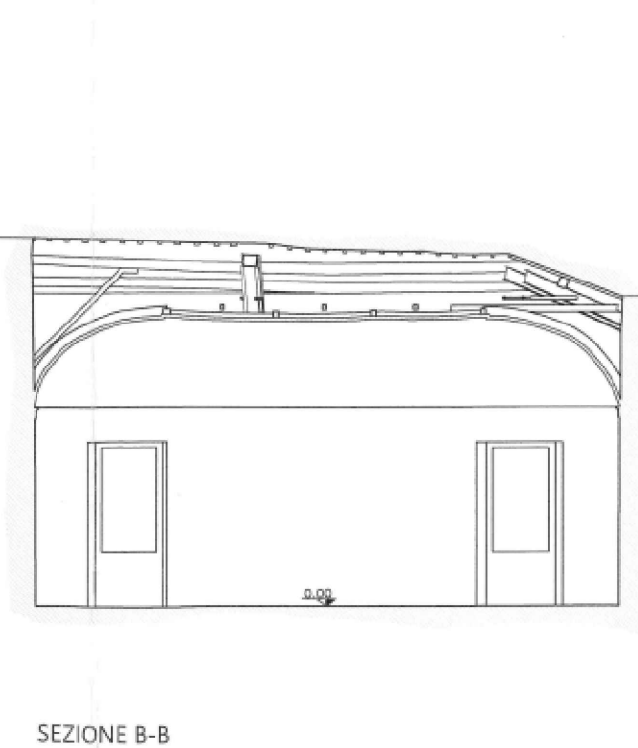
SEZIONE E-E



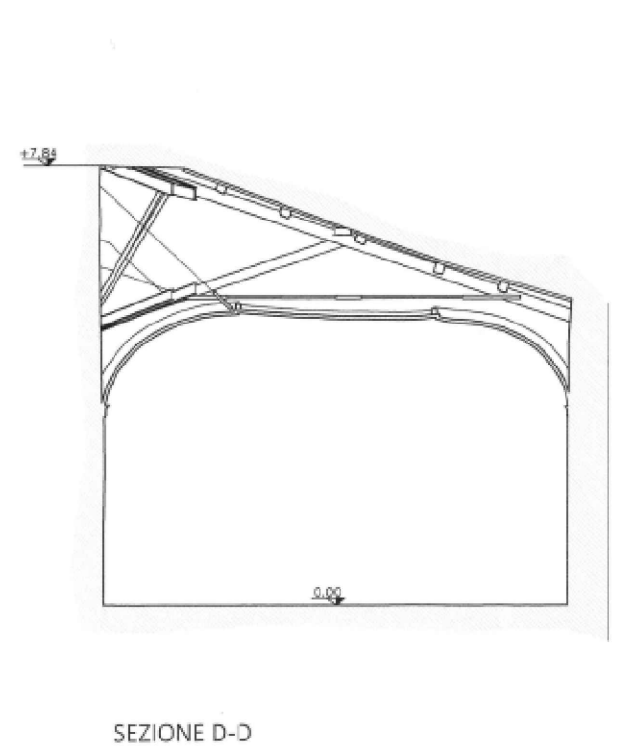
PIANTA ESTRADOSSO VOLTA



PIANTA COPERTURA



SEZIONE B-B



SEZIONE D-D

N.B.
Tutte le linee in tratteggio indicano elementi non rilevati direttamente dalla scansione laser perché in ombra rispetto alla scansione stessa, ma ricavati da elementi incerti e/o misurazioni parziali



CONSIGLIO DI STATO
Segretariato Generale per la Giustizia Amministrativa
Ufficio Unico Contratti e Risorse

**LAVORI URGENTI DI NATURA STRUTTURALE E CONSERVATIVA
DELLE COPERTURE DI PALAZZO SPADA
SEDE CONSIGLIO DI STATO**

PROGETTAZIONE

Ing. Michele Primavera
Ing. Giuseppe A. Cravana

PROGETTO DEFINITIVO

INTERVENTI DI CONSOLIDAMENTO
PIANO 4° AMBIENTE D1

N. rev	Nota di revisione
1	

Data
FEB 2022

TAV
9